

women empower energy communities

by the European Citizen Energy Academy

REScoop.EU



Supported by:



Federal Ministry
for the Environment, Nature Conservation
and Nuclear Safety



European
Climate Initiative
EUKI

based on a decision of the German Bundestag



RESCOOP.EU



Agenda

| | |
|-------------|---|
| 14.00-14.10 | Welcome and introduction |
| 14.10-14.25 | Dimensions of gender and energy Marika Kuschan, WECF |
| 14.25-14.50 | Interactive exercise: "house of my dream" Regina Drexel, WECF |
| 14.50-15.00 | Relevance and impact of gender just energy communities Katharina Habersbrunner, WECF & BBEn |
| 15.00-15.10 | Good practices of gender just energy communities Miriam Rodriguez-Ruiz, Electra Energy |
| 15.10-15.20 | Q&A |
| 15.20-15.30 | Final remarks |



Antonia Proka: Project manager



Regina Drexel: Energy expert



Marika Kuschan: Gender and energy expert



Katharina Habersbrunner: Energy community expert



Miriam Rodríguez Ruiz: President Electra Energy Cooperative

SEX and GENDER



GENDER

Socially-constructed roles, behaviours, expressions and identities of girls, women, boys, men and gender-diverse people.

SEX

Biological attributes of humans and animals, including physical features, chromosomes, gene expression, hormones and anatomy.

SEX and GENDER

SEX: Biological and physiological characteristics, usually categorized as female and male

GENDER: Power relations and behaviours, activities and attributes that a society considers appropriate for each gender

→ **GENDER:**
Socially constructed roles

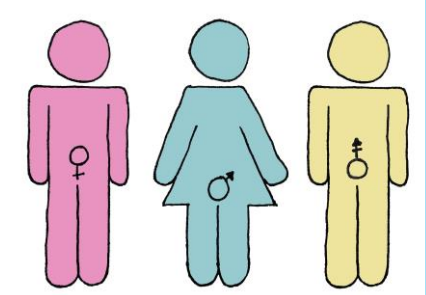


GENDER ROLES ...

... are the particular economic, social roles and responsibilities considered appropriate for women and men

... vary across cultures and through time

... they do not exist in isolation

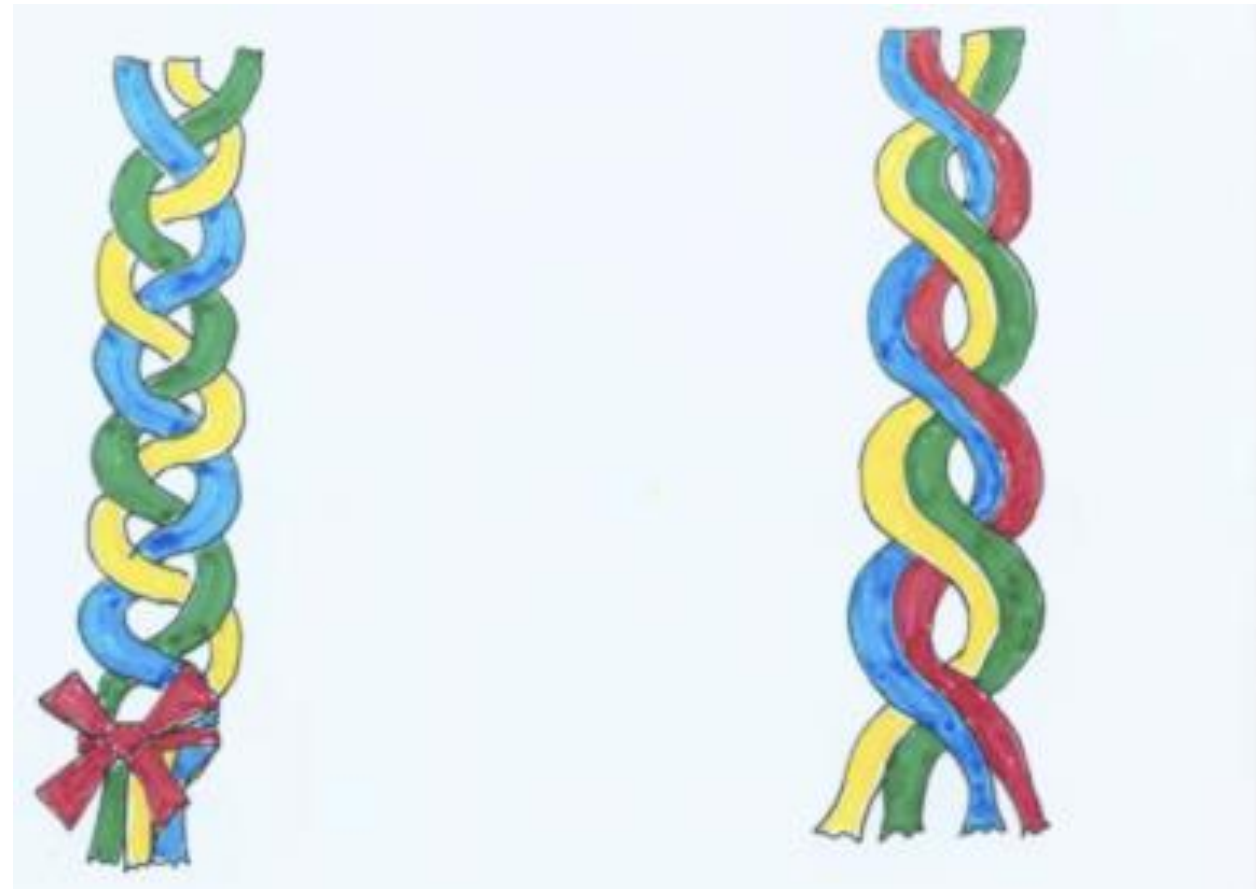


Dimensions of gender and energy



wecf

Dimensions of gender and energy



source: Dr. Barbara Stiegler, Friedrich-Ebert - Stiftung



appropriateness



costs

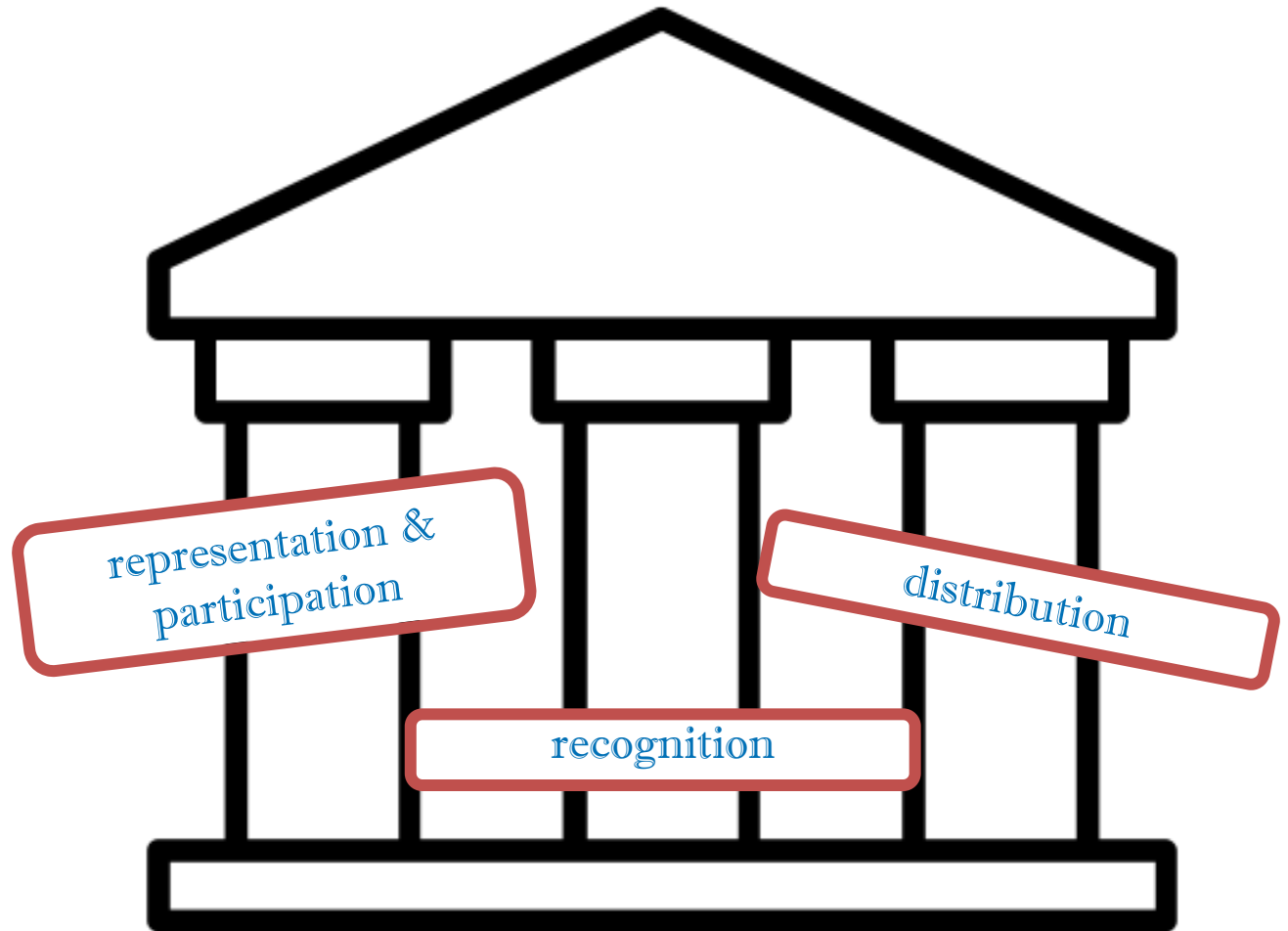


feasibility



affectedness of gender

Dimensions of gender and energy



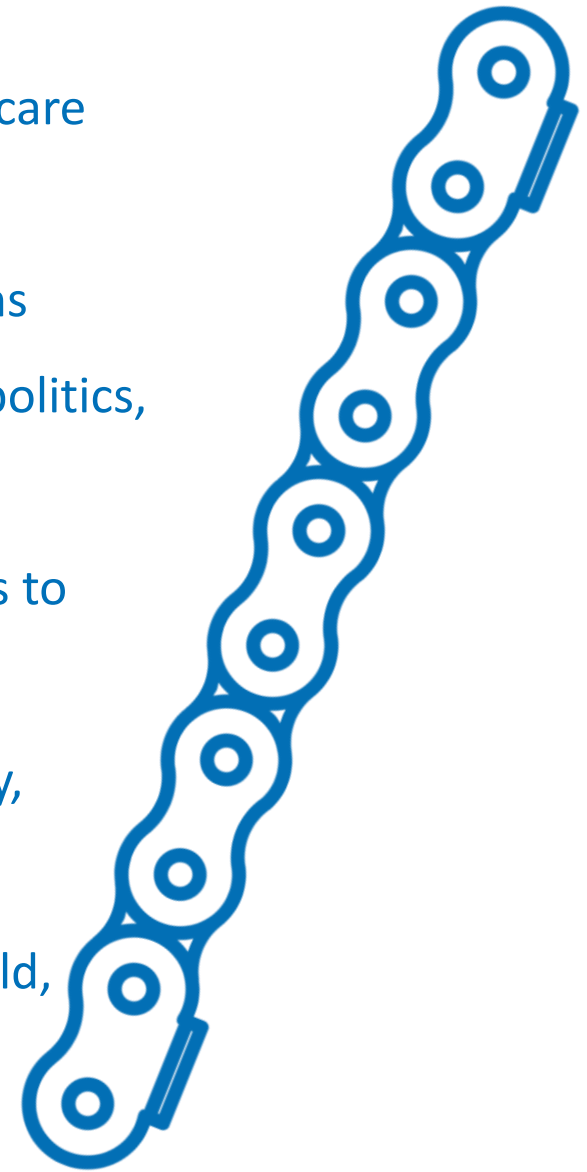
Dimensions of gender and energy

- Reproductive work
- Productive work
- Decision-making, control
- Public services, infrastructure
- Body, health (sex)
- Androcentrism



Dimensions of gender and energy

- **Reproductive work** – household, childcare
- **Productive work** – education (STEM), working conditions, equal pay, pensions
- **Decision-making, control** – research, politics, utilities, private sector
- **Public services, infrastructure** – access to energy, mobility
- **Body, health (sex)** – comfort sensitivity, vulnerability based on pregnancy
- **Androcentrism** – male dominated world, energy and climate policy



Dimensions of gender and energy

CARE WORK



Dimensions of gender and energy

ENERGY POVERTY



Dimensions of gender and energy



wecf



**Design the house of your dreams!
Imagine everything is possible and there are no
limitations!**

- What is important for your well being?
- Where does the electricity for your house come from?
- Where do you need energy? Which devices are important in your house?
- Where does the warm water come from? Where and when do you need it?
- What kind of heating do you use?

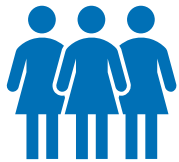
RELEVANCE of gender just energy communities



- Renewable energy and gender are on policy agendas, but lack of coherent policies



- Higher risk of energy poverty for women



- Women: Higher awareness, higher engagement in energy and environmental topics, less footprint

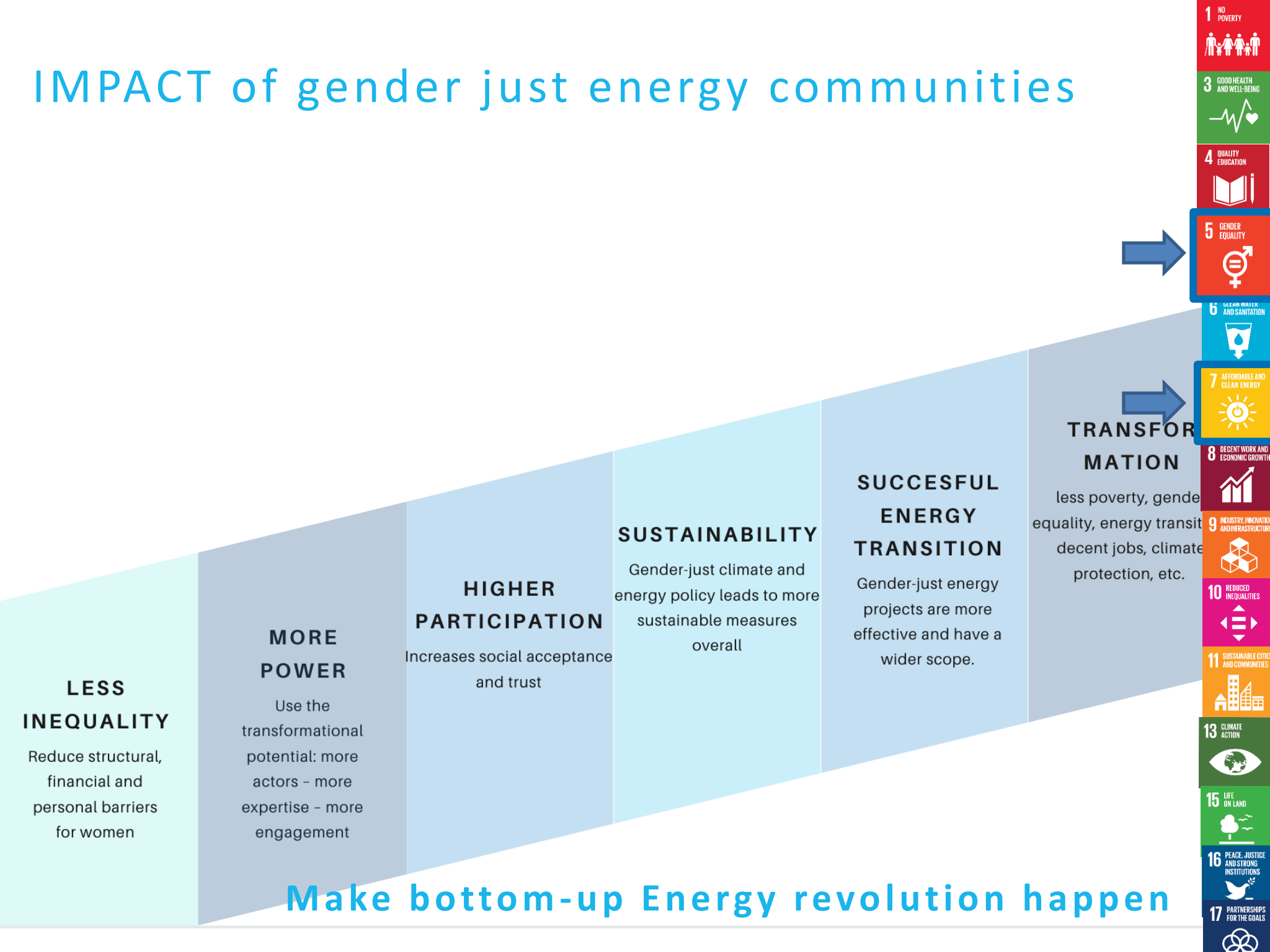


- Social, cultural and political factors place energy as „male“ topic and influence participation and decision making



- **No time to waste** – energy communities as essential cornerstones for the energy transition and gender equality

IMPACT of gender just energy communities



GENDER INSTRUMENTS



Gender analysis



Capacity building for partners



Gender just communication



Targets and indicators



Women's empowerment and leadership



Gender just funding models



Gender just policy and advocacy



Multi-stakeholder approach



Thank you very much!

